

Supplementary material

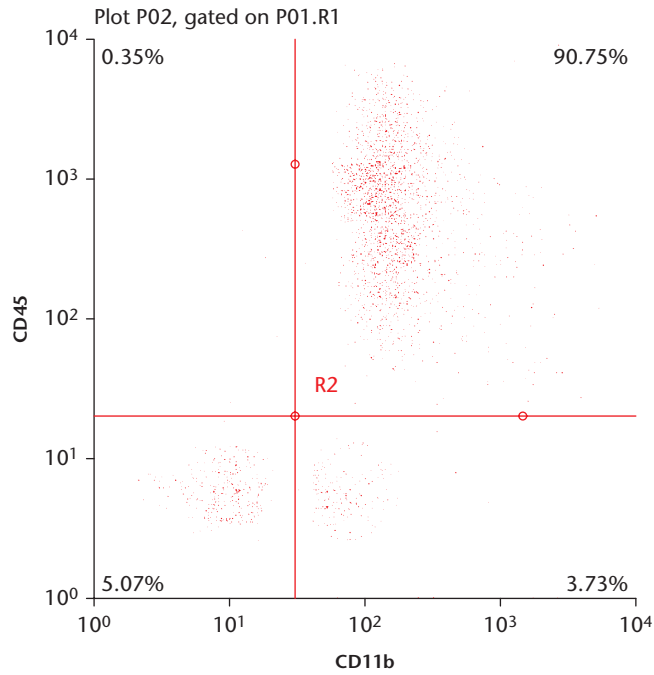


Fig. a

A representative flow cytometry diagram assessing the purity of neutrophils after isolation with the Histopaque method.

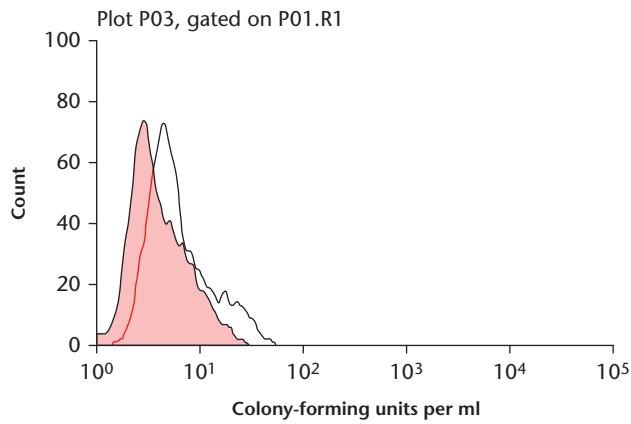


Fig. ba

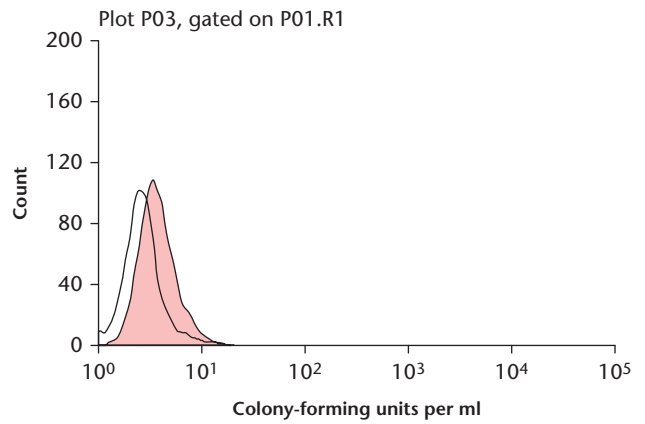


Fig. bb

To determine whether extracellular *Staphylococcus aureus* was attached to neutrophils, isolated methicillin-resistant *Staphylococcus aureus* (MRSA)-carrying neutrophils isolated from other rats injected intravenously with MRSA (MNiv) and MRSA-carrying neutrophils isolated from other rats that had undergone intestinal MRSA colonization (MNin) were incubated with *S. aureus*-specific antibody and analyzed with flow cytometry. No attached extracellular MRSA was found either from a) MNin or b) MNiv. White, isotype control; red, cells incubated with *S. aureus*-specific antibodies.