



Supplementary Material

10.1302/2046-3758.911.BJR-2020-0148.R2

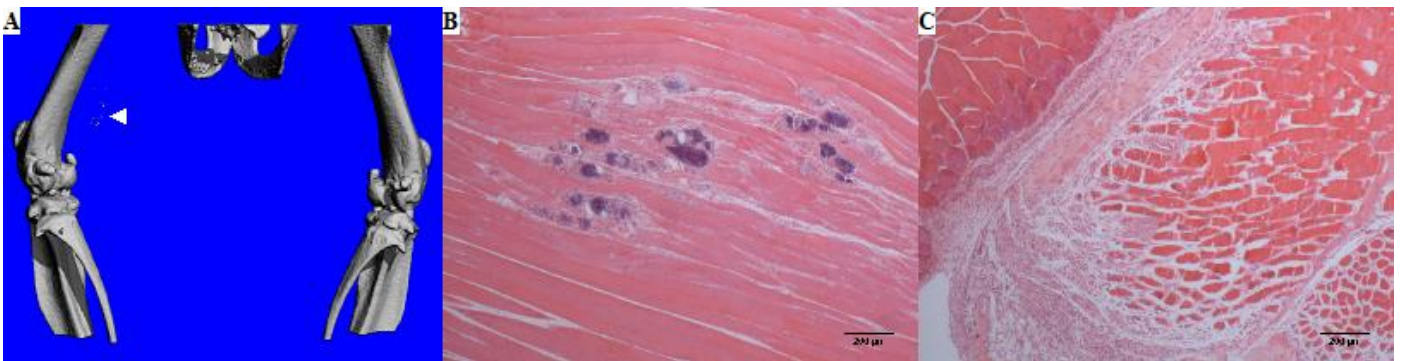


Figure a. Systemic effect caused by devitalized muscle tissue implantation. Dystrophic calcification (DC) was found at Day 14 timepoint in the left leg where cardiotoxin (CTX) injection was performed, whereas muscle implantation was performed on the right leg of the animal. a) MicroCT imaging showing DC formation (arrowhead). b) Haematoxylin and eosin (H&E) staining showing the DC in the left leg of the animal. Bar = 200 μm ; magnification: 40 \times . c) H&E staining showing the devitalized muscle implant in the right leg of the animal. Bar = 200 μm ; magnification: 40 \times .